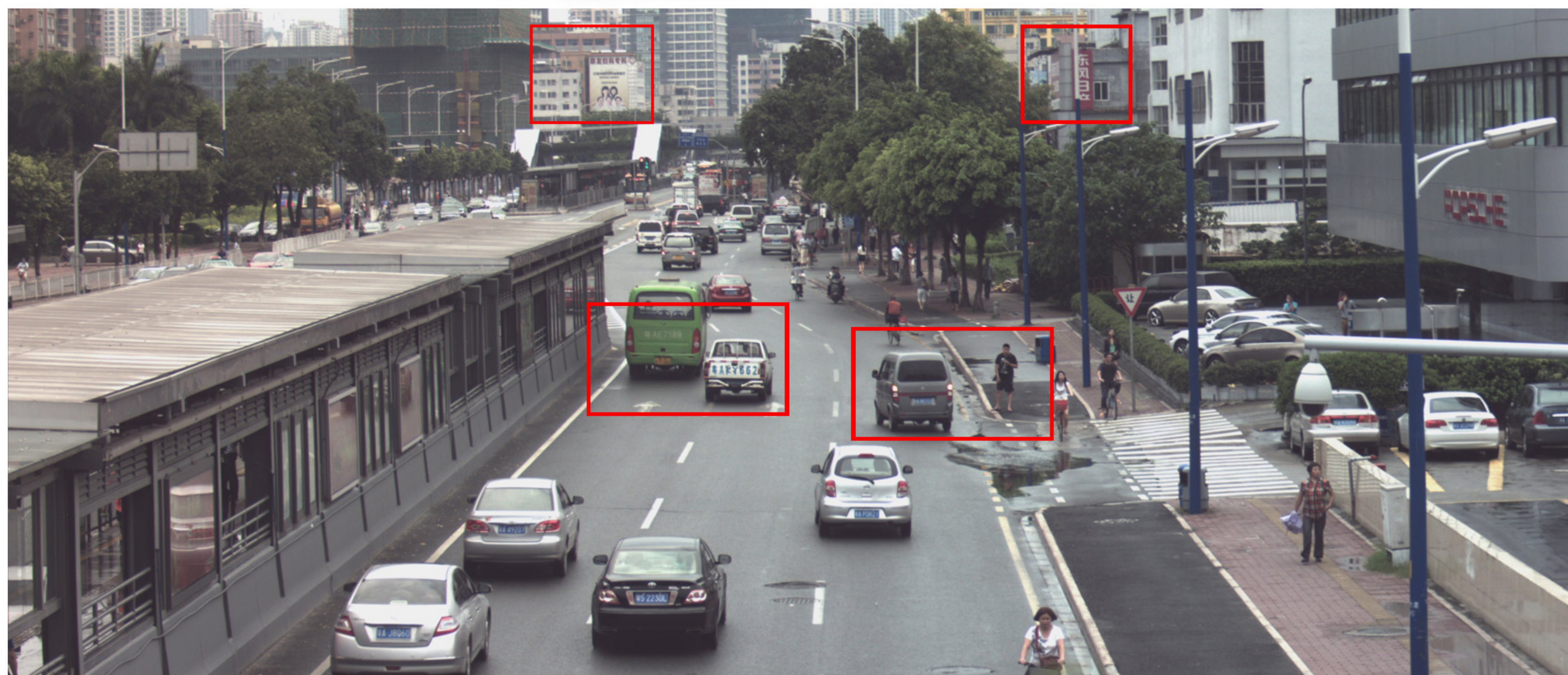


JPLY

G1TD14C

14.0 Mega Colour USB 3.0 camera



JPLY Technology
Vision changes the future

14.0 Mega Colour USB 3.0 camera

Model	G1TD14C	
Sensor	MT9F002	
Imager Sensor	1/2.3"CMOS Colour	
Effective pixels	4348H*3288V (14M)	
Resolution & Frame rate	4348*3288:12 fps	
	2592*1944 (ROI) : 32 fps	2048*1536 (BIN) : 28 fps
	1920*1082 (BIN) : 38 fps	1920*1082 (ROI) : 71 fps
	1024*768 (ROI) : 102 fps	800*600 (SUM) : 64 fps
	Random size ROI	
Pixel dimension	1.4μm*1.4μm	
Scanning mode	Progressive scan	
Shutter	Electronic rolling shutter	
Exposure time	0.02~300ms	
Image data format	8bit/10bit/12bit	
Sensitivity	0.724V/LUX-sec (550nm)	
Spectral response	400nm-650nm (with IR-filter)	
SNR	35.5dB	
Dynamic range	65.5dB	
Exposure control	Auto exposure/Manual exposure/Area exposure	
White balance	Manual white balance/Once key white balance/Area white balance	
Programmable control	Camera working speed,image dimension,shootmode,image lightness,	
Support system	exposure time,gain,anti-flick,GAMMA,contrast,RGB gain,saturation,black	
Support interface	balance,sharpness	
Data interface	Windows XP(32-bit); Win7(32/64-bit)	
Product indicator	TWAIN , DirectShow	
Power consumption	USB3.0 5Gbps	
Power supply	LED constantly being on when power on and standing by and blink when working	
Working temperature	Work≤3.8W	
Storage temperature	USB5V (Without external power supply circuit)	
Working humidity	0°C~45°C	
Storage humidity	-20°C~60°C	
Working humidity	10%-90%RH (No condensation)	
Storage humidity	10%-60%RH	
Lens Mount	C mount	

If the product above can't satisfy your needs,please contact us to customize develop new product to satisfy your specified application requirement.

Guangzhou JPLY electronic technology Co.,Ltd

Tel: (86)020-38077661

Fax: (86)020-38077581

Skype: jply.technology

E-mail: sales@spectrumsee.com

WEB: www.spectrumsee.com/en/