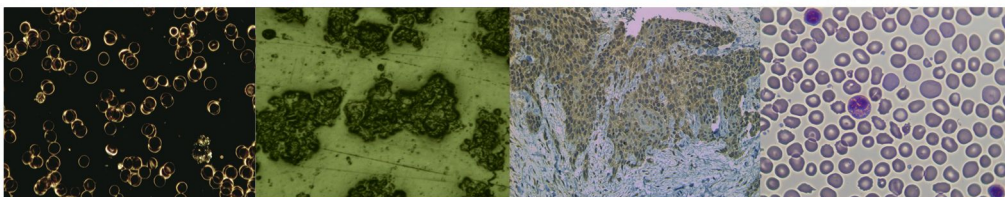
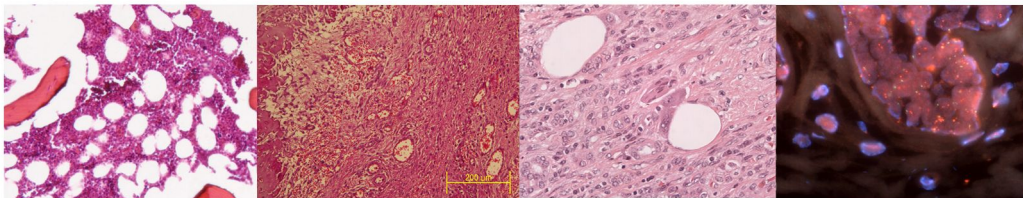


JPLY

G1TD10C

G1TD10C 10.0Mega Colour USB3.0 Camera

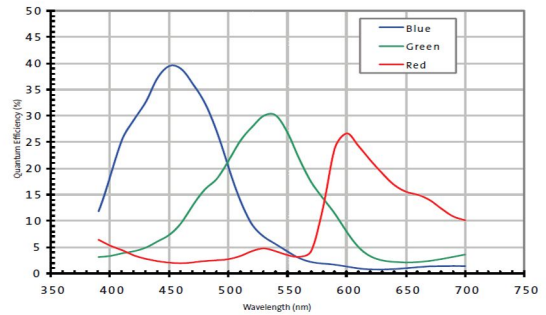


JPLY Technology
Vision changes the future

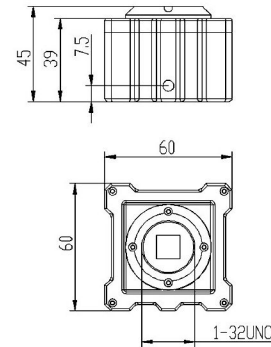
G1TD10C 10.0Mega Color USB3.0 Camera

Sensor Model	1/2.3" CMOS Color
Sensor Dimension	1.67 μ m x 1.67 μ m 67 μ m
Resolution	3840x2748
Scan Method	Progressive scan
Sensibility	0.31V/lux-sec (550nm)
Frame Rate	7fps @3840x2748 17fps@1920x1080 bin
Shutter	Electronic Shutter
SNR	40.5dB
Spectral Response	400nm~1000nm
Data interface	USB3.0 480Mb/s 1.8M Cable
Power	DC 5V ± 5%
Current	≈200 mA
White Balance	Manual/Auto One-key white balance
Auto Exposure Control	49 μ s - 3s, Manual/Auto exposure
Lens Mount	C Mount
Busy Indicator	LED
Working temperature	0° C ~ 60° C
Working Humidity	45-85%
Software	spectrumsee image analysis software with modular designing, including image previewing, capturing, analysing, processing, sharing fuction.

Spectral Response Figure:



Camera Size



It gives users the latest image processing experiences.
 The software fuction:image capturing,time lapse,measuring,data exporting
 image mosaic,depth of field overlaying,text instruction inserting,etc.

If the product above can't satisfy your need,please contact us to costomize developpe new product to satisfy your specified application requirement.

OEM	Appearance				PCB		Software		packaging	
	Housing	Dimension	Color	LOGO	Sensor	Pixel	Function	LOGO	Outer packaging	Inner liner
Simple	✓	✓	✓	✓	✓	✓	✓	✓	✓	✓
Delicate	✓	✓	✓	✓	✓	✓	✓	✓	✓	✓

JPLY Electronic Technology Co.,Ltd

Tele:020-38077661

Fax:020-38077581

Address:3rd Floor, Number 59, Tangdong East Rd., Guangzhou China

Web:www.spectrumsee.com/EN/Default.aspx



Specifications