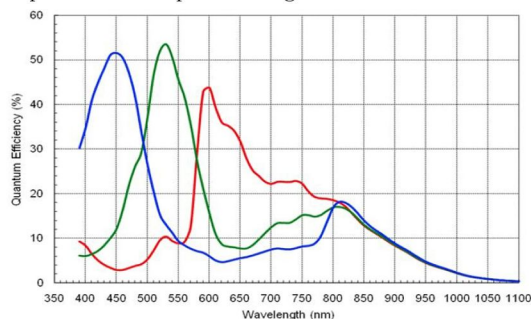


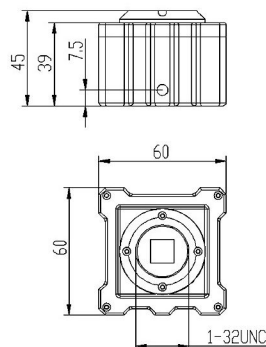
## G1TD05C-C/M 5.0Mega Colour/BW USB3.0 Camera

Sensor Model	1/2.5" Colour /BW 5.0 Mega CMOS
Sensor Dimension	2.2 μm x 2.2 μm
Resolution	2592 × 1944
Scan Method	Progressive scan
Sensitivity	1.4V/lux-sec (550nm)
Frame Rate	14fps@ 2592 x 1944
Shutter	Electronic shutter
SNR	44 dB
Spectral Response	400nm~1000nm
Data interface	USB3.0, 5Gbps, 1.8M Cable
Power	DC 5V ± 5%
Current	≈ 500 mA
White Balance	white balance
Auto Exposure	37us~2.4s, Manual/Auto exposure
Control	Area Exposure
Lens Mount	C Mount
Busy Indicator	LED
Working temperature	0° C ~ 60° C
Working Humidity	0-85%
Software	spectrumsee image analysis software with modular designing, including image previewing, capturing, analysing, processing, sharing function.

Spectral Response Figure:



Camera Size:



It gives users the latest image processing experiences.

The software function: image capturing, time lapse, measuring, data exporting image mosaic, depth of field overlaying, text instruction inserting, etc.

If the product above can't satisfy your need, please contact us to customize develop new product to satisfy your specified application requirement. .

OEM	Appearance				PCB		Software		packaging	
	Housing	Dimension	Color	LOGO	Sensor	Pixel	Function	LOGO	Outer packaging	Inner liner
Simple			✓	✓	✓	✓		✓		
Delicate	✓	✓	✓	✓	✓	✓	✓	✓	✓	✓

JPLY Electronic Technology Co., Ltd

Tele: 020-38077661

Fax: 020-38077581

Address: 3rd Floor, Number 59 . Tangdong East Rd, Guangzhou, China

Web: wwspectrumsee.com/EN/Default.aspx

